

# VISIONARY

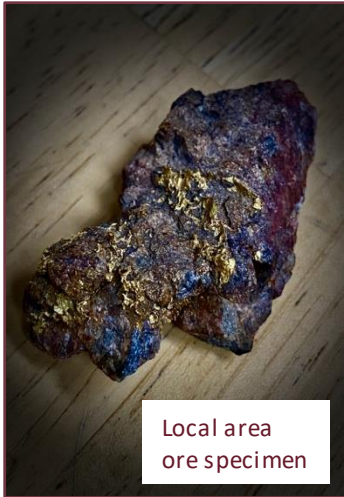
## GOLD CORP

**Visionary Gold Corp**, formerly Galileo Exploration Ltd (**TSX-V:GXL**) is a gold focused, mineral exploration company based in Vancouver, Canada, which through its wholly-owned US subsidiary, Lost Creek Corporation, has operations in Lander, WY. The company is currently focused on the **Wolf Gold Project**, situated in the historically prolific Miners Delight Greywacke Formation, home to late-achean orogenic gold mines that produced between 1880's-1930's in the South Pass Greenstone Belt of Fremont County, Wyoming. The Wolf Gold Project is road accessible by 45-minute drive from Lander, Wyoming and sits on a historically mined and prospected chlorite and hematite stained shear zone that has been mapped and appears to be altered at surface for 1000M along strike. Initial acquisition and exploration activities commenced in 2020, with the acquisition of 140 acres of patents, which hosts the historic Wolf Mine (Ruby Claims) and other nearby historical mines, including the Mill and Lode patented claims in the Lewiston Gold District, where gold was first discovered in the 1880's. Surrounding the Lewiston district and Wolf Mine, Visionary, via Lost Creek has staked three groups of claims (Wolf, Miz and BM's) covering 10.25km<sup>2</sup> and intends to build its land package as it develops maiden drill targets through systematic geochemical sampling, geophysical surveying and structural mapping. Visionary is made up of a tight-knit group of mining professionals and investors with highly successful backgrounds and a great deal of experience in the mineral resource sector.

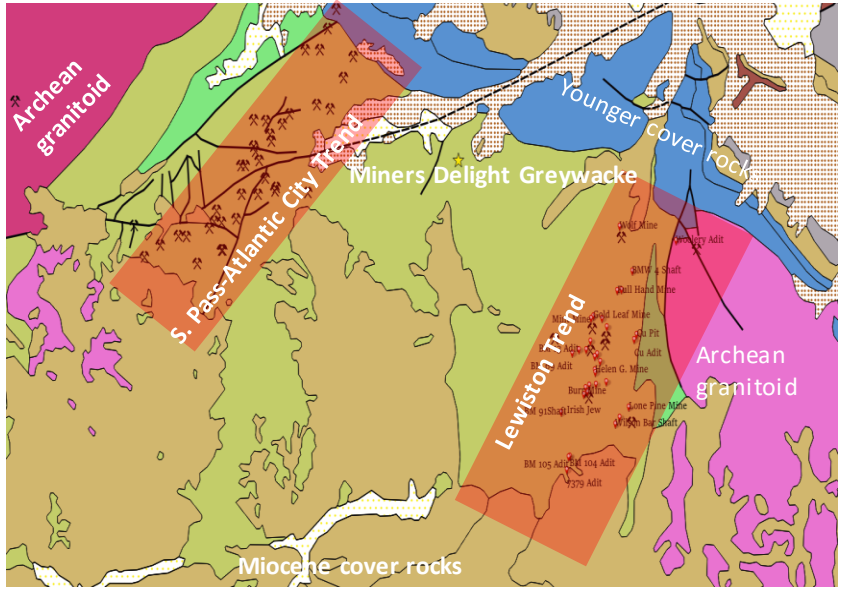
### Miners Delight Basin Geology -->



MD Greywacke foliation at surface



Local area ore specimen



<b>Share Structure December 1<sup>st</sup>, 2020</b>	
Common Shares	51M
Fully Diluted	53M
Insider's % Fully Diluted –	61.9%
Insider's % Common Shares –	50.8%
Cash	-0.5M CDN

<b>Management and Directors</b>
Wes Adams, CEO, Director
Robert Doyle, CFO, Director
Marc Blythe, Director
Darren Lindsey, Director
John Kanderka, Chairman of the Board

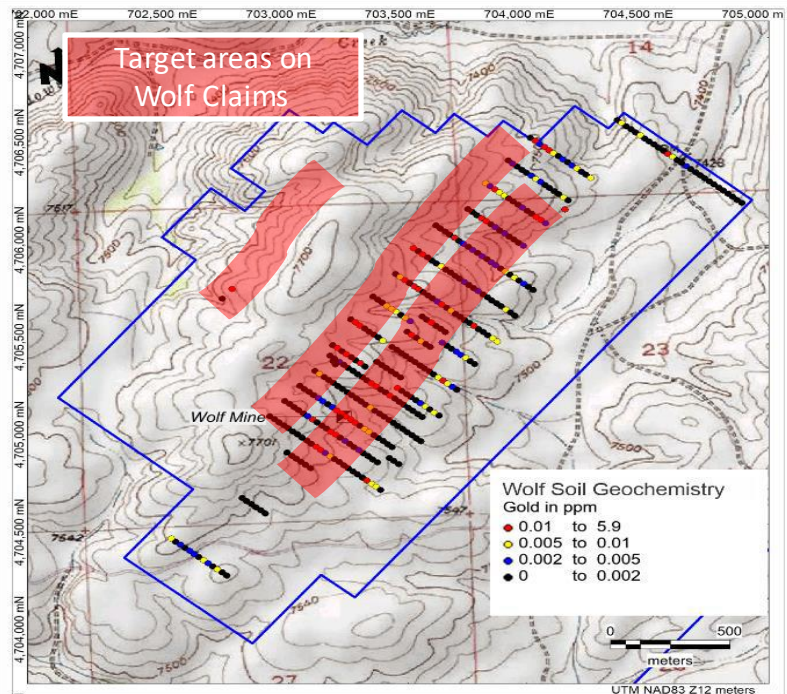


# VISIONARY

## GOLD CORP

### High Grade Gold potential at Wolf

- ▶ Rock chip samples of a fault gouge within the Wolf Shear Zone returning **19.87 g/t and 20.63 g/t gold**.
- ▶ Rock chip channel samples across a portion of the alteration envelope within the Wolf Shear Zone returning **8.0m of 2.13 g/t gold including 2.0m of 5.67 g/t gold**.
- ▶ Additional Rock Chip and Surface samples ranging from **2.63 g/t gold up to 15.46 g/t gold in the alteration envelope within the Wolf Shear Zone**.
- ▶ **2.5KM Gold in-soil Anomaly along Wolf Shear,**



### Upcoming News and Next Steps

- ✓ Analyzing gold and other gold-related pathfinder element via systematic grid geochemical sampling
- ✓ Complete and interpret initial geophysical surveys to test for potentially mineralised zones underneath surface gold showings
- ✓ Characterise chemical alteration and gold mineralisation of rock along >2000m strike and test potentially mineralised parallel structures
- ✓ NI 43-101 Report Complete
- ▶ **Drilling at the Wolf Mine in 2021**
- ▶ **Continue to build on district-scale land package.**
- ▶ **Evaluate new lands using data collected from Wolf Project to create “geologic toolbox” for exploration success regionally**

### Investor Contact

Wes Adams, Acting CFO, Director  
T: 303.809.4668  
E: wadams@visionarygoldcorp.com

Corporate Office  
Visionary Gold Corp  
325 Howe St, Suite 407  
Vancouver, BC V6C 1Z7